

# TECSUN

# ICR-110

## Radio Recorder / Digital Audio Player

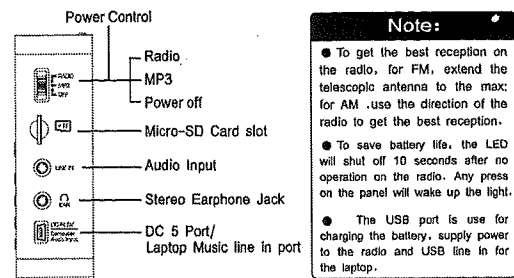
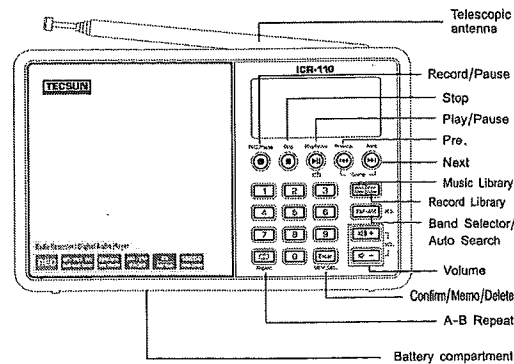
### OPERATION MANUAL

Please read this instruction carefully before using the device

### TECSUN DIGITAL TECHNOLOGY CO., LTD

Address: 189 GuanChang Road, DongCheng District, DongGuang, P.R.China  
Tel: 86-0769-23167028 Fax: 86-0769-23160700  
E-mail: tecsun@tecsun.com.cn

### Function instructions and descriptions



**Delete a station:** Select a station by short press [Pre/Next], press and hold the [Memo/Del] key to delete it. You will see a flash on the number, then short press it to confirm the delete.

**Memory address sort order:** Turn off the radio, turn on the radio, then the station in the memory will be sorted in an order by frequency value, from small to large.

### Mp3 Player

1. In a radio Off mode, Insert the Micro-SD card in a direction as shown on the radio.
2. Set the switch to MP3, it will enter the Music library and start play the music, it will play the music stored in the library. Short press [Record] key to enter the Record Library and start to play recorded files in the Record Library.
3. Short press [Play/Pause] key to pause or play the music, long press it to select single music repeat or all music repeat mode.
4. Short press [Pause] key to repeat the music being played.
5. Short press [Pre] or [Next] to change the music, press and hold it to fast forward or fast backward the music being played.
6. Direct key in the numbers to select the music you like to listen, the radio will automatically confirm after 2 seconds. Or you may confirm the key in number by press the confirmation Key[Confirm]. Err will show up if the

numbers are input wrong.

**Note :** The MP3 player support broken point playing, where you stop , it will continue to play with it from where it was broken.

### A-B Repeat

This is perfect feature that designed to help learn a language or singing.

**Activation:** In the playing of a music, if you want to listen to a part of it repeatedly, just short press [AB] to activate start point A, then you enjoy the music, then want to stop, press [AB] to set the point B, then the player will play the music from A to B repeatedly.

**Stop:** Short press [AB] key to stop it or you may press stop key [Stop] to stop the repeat.

**Pause and continue:** short press [Play/Pause] key to pause it or continue the repeat listing.

### Audio Input

With the radio On, plug the audio cable to any audio output jack, this radio will work as a speaker. ( The output equipment can be a laptop computer, a radio, a cell phone or CD player.

### Recording

In the 3 Modes, you can record what is needed: Radio Mode, MP3 Playing Mode or Audion Line Mode.

1. In Radio mode, When listen to a radio, you are recording the radio broadcasting.
2. In MP3 Playing Mode, you are recording through the Mic

### Listening to the Radio

Set the switch to Radio to turn on the radio, select AM or FM to select the band. Press [Pre] or [Next] to change station.

The ways to select a station:

**1. Auto search and auto save the station:** For the first time use, under AM or FM band, press and hold the [FM/AM] key to activate the auto search. It will find out the stations and save them to the memory.

**Note:** If you change the location, please do the auto search again.

**2. Manual Search:** Press and hold the [Pre] or [Next] to start manual search.

**3. Key-in the numbers to select the station you want:** For example, if you like to listen to FM98.0, key in the number 9,8,0. you will see the station comes out from the LED and radio.

**Note:** If you key a number that is not in the frequency range, Err will show on the LED.

**4. Recall the station from the memo:** Key in the number, 2 seconds later, the radio will confirm the number and recall it if the number key-in is correct. Or you may use the confirm key after you key in the number to recall it.

**Note:** If the number does not exist, Err will show on the LED, it means no station is selected.

### Manually save and delete a station

**Manual save a station:** Select a station and short press [Memo/Del] key to save it.

**Note:** To save a station, the address flashes twice to show it is saved successfully.

后续 →

the voice, you can use an earphone to monitor what is recording. Best for a meeting, interview or learning a language.

3. In a Audio line in mode, you can record voice from a shortwave radio or other audio equipment.

### Record Ending:

1. In the process of Radio recording, short press [Stop], [Play/Pause] or [AB] key, any of them, to stop the recording.

2. In the MP3 Mode or audio line-in mode, short press [Stop], [Play/Pause] or [Next] or [Pre] key to stop the recording.

**Note:** The recorded music or voice will be played after each stop.

### Back to the Record Mode:

After each record ending, shot press [Stop] or [Play/Pause] key to go back to the record mode.

### Recording Pause:

In the process of recording, you can press [Pause] to pause the recording, press it again to continue the recording.

### Note:

1. In the Radio recording processing, press [Pre] or [Next], you can change the radio station.
2. All the recorded files will be saved in the SD card under a name Record Library.

## File deletion


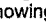
1. After the radio is turned on, enter the Music Library or Record Library, find the file you want to delete.
2. Press and hold the [Memo/Del] key, the "DEL" sign will flash on the LED, short press the [Memo/Del] key to confirm the deletion.

## USB Laptop Speaker

1. Connect the laptop with the speaker via USB cable
2. Set the switch to MP3 or radio, the LED will show PC.
3. Play the music with a program in your laptop, you will hear the music from the speaker. Use the [Pre] or [Next] to select the music from the computer.

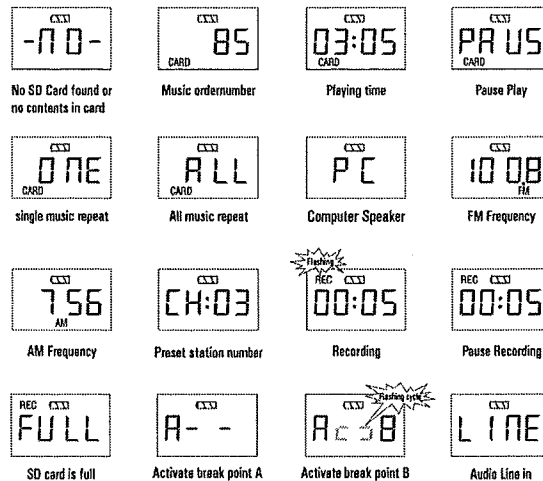
**Note:** Press and hold the [Play/Pause] key, you can exit the speaker from the laptop, at this moment, USB cable is working as the charging cable.

## Charging

Use a USB charger ( Not included) to charge the radio by connecting it to any USB charger or a computer USB port. When the battery sign "  " shows on the LED, it means the battery need a charge. When the battery is fully charged, sign "  " is showing on the LED.

- Q:** Why some stations are not stored when performing the ATS function?  
**A:** For some stations the signal is too weak, or there may be too much interference. It is suggested to search and store the stations manually.

## Signs



## System Set

### Set FM radio frequency range

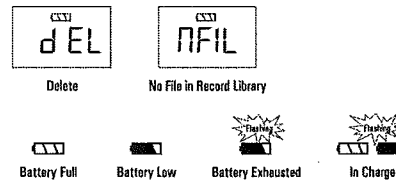
1. Set the switch to Radio.
2. Press [FM/AM] once to listen to FM station.
3. Press and hold [Music library] key to select 64 – 108 MHz or 87.00—108.00MHz

### Set AM step

1. Set the switch to Radio.
2. Short press [FM/AM] to select AM band.
3. Press and hold [Record Library] key to select step 9 or 10 KHz.

## Questions and Answers

- Q:** I cannot turn on the device?  
**A:** The battery power maybe too low, charge the battery then try again.
- Q:** I cannot play the music in the micro SD card?  
**A:** 1. The device can play MP3, WMA or WAV format, if you have other than these 3 formats, it will not play, or the file is corrupted.  
 2. The card maybe damaged.



## Maintenance

1. Do not drop or damage the device, avoid contact with water.
2. Do not expose to temperatures below -5°C or over +50°C.
3. Do not clean the machine with chemicals.
4. Do not open the machine and change components, this will terminate the warranty.

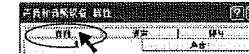
## Note on Lithium Battery

1. The battery may explode if handled in an improper way.
2. You can only use the same type of battery.
3. Do not use it in an extreme cold or hot temperatures.
4. Never throw the used battery into fire.
5. When going onto an aircraft, do not place the battery into the checked-in luggage; place it into your carry-on luggage in the cabin.

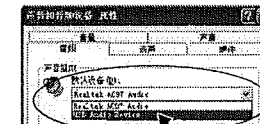
- Q:** When I use it as a Computer speaker, it does not turn on?  
**A:** Please follow below steps to try again:  
 Connect the USB cable to the computer, turn on the device (set switch to MP3 or FM) then turn on the music player on your computer.  
 If you still cannot hear the sound, try the following steps:  
 1. Connect the computer with this device → Turn on the device, use the mouse to open the speaker menu on the right corner of your computer → select " Adjust Audio Properties".



2. Select "Audio".



3. Select Default device option → select "USB Audio Device" → select "OK".



4. Connect your device with the computer, it should work properly.

## Parts Included

18650 Lithium Battery.....	1
USB Cable.....	1
Audio Cable.....	1
User's manual.....	1

## Specifications

<b>Music formats:</b>	MP3/WMA/WAV
<b>Recording format:</b>	MP3/128Kbps
<b>FM frequency range:</b>	64-108 MHz
	You can freely choose: 87-108 MHz(standard)
	64-108 MHz(Russia & Japan)
<b>AM frequency range:</b>	522-1620kHz(Step 9kHz for Asia/Africa/Europe)
	520-1710kHz(Step 10kHz for America)
<b>FM Noise sensitivity:</b>	better than 3µV
<b>AM Noise sensitivity:</b>	better than 1mV/m
<b>Speaker size:</b>	Φ40mm, 4Ω, 3W
<b>Sound Response:</b>	50Hz - 18kHz
<b>Charger ( Not included):</b>	USB, 5V with current 250mA
<b>Unit Size:</b>	180 X 110 X 35mm
<b>Recording time:</b>	

SD Card	1G	2G	4G	8G
Recording Time	15 Hours	30 Hours	60 Hours	120 Hours

- Note:**  
 1. This chart shows recording on a blank card, maximum card supported is 32GB.  
 2. Each recording time is not limited, but the longest recording time is 60 minutes, over 60 minutes, it will create a new file.