

SANYO

NO.1173C

LB1241**Fluorescent Display Tube Driver**

The LB1241 has been designed for interfacing low-level digital devices to fluorescent display tubes. Its 8-circuit independent Darlington output stage is used for digit and segment drivers. Equivalent pull-down resistors are built in; externally connected resistors to prevent ghosts are no longer required. Output is activated when input voltages are at a low level, making the IC an ideal interface for N-channel MOS devices.

FEATURES

- 8 circuit independent Darlington driver.
- Capable of driving digits or segments.
- Built-in pull-down sink current.
- Rated at 45 V/30 mA
- Large pull-down current and capable of preventing ghost effectively.

ABSOLUTE MAXIMUM RATINGS/ $T_a = 25^\circ\text{C}$

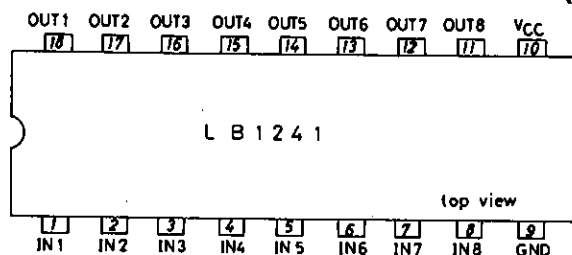
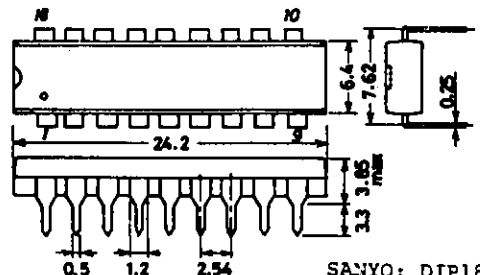
				unit
Maximum power supply voltage	V_{CC} max		-0.3 ~ 45	V
Output supply voltage	V_{OUT}		-0.3 ~ V_{CC}	V
Input supply voltage	V_{IN}	$GND < V_{IN}$	$V_{CC} - 10 \sim V_{CC}$	V
Maximum output current	I_{OUT}		-30	mA
Allowable power dissipation	P_d max		1130	mW
Operating temperature	T_{opr}		-20 ~ +75	$^\circ\text{C}$
Storage temperature	T_{stg}		-40 ~ +150	$^\circ\text{C}$

ALLOWABLE OPERATING CONDITIONS/ $T_a = 25^\circ\text{C}$

				unit
Supply voltage	V_{CC}		4.75 ~ 45	V
Input "H" level voltage	V_{IH}	$GND < V_{IN}, I_{OUT} = -30 \text{ mA}$	$V_{CC} - 10 \sim V_{CC} - 2.8$	V
Input "L" level voltage	V_{IL}	$I_{OUT} \leq -30 \mu\text{A}$	$V_{CC} - 0.45 \sim V_{CC}$	V

ELECTRICAL CHARACTERISTICS/ $T_a = 25^\circ\text{C}, V_{CC} = 45 \text{ V}$

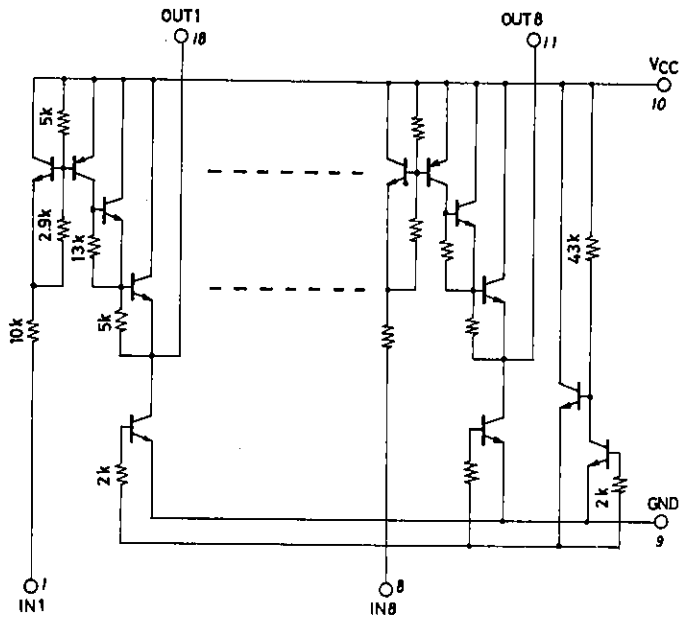
			min	typ	max	unit
Supply current	I_{CCL}	All inputs: open	0.6	1.3	2.3	mA
	I_{CCH}	All inputs: $V_{IN} = V_{CC} - 5 \text{ V}$	7.0	10	16	mA
Output voltage	V_{OL}	$V_{IN} = V_{CC} - 0.3 \text{ V}, I_{OUT} = 0 \text{ mA}$			200	mV
	V_{OH}	$V_{IN} = V_{CC} - 5 \text{ V}, I_{OUT} = -30 \text{ mA}$	$V_{CC} - 2.0$	$V_{CC} - 1.6$		V
Pull-down current	I_{OPL}	$V_{OUT} = V_{CC}$	0.6	1.0	1.8	mA
Input current	I_{IN1}	$V_{IN} = V_{CC} - 5 \text{ V}$	0.2	0.4	0.6	mA
	I_{IN2}	$V_{IN} = V_{CC} - 10 \text{ V}$	0.6	0.9	1.3	mA
Output leakage current	I_{OL}	$V_{IN} = V_{CC} - 0.3 \text{ V}, V_{OUT} = 0.5 \text{ V}$	-30			μA

PIN ASSIGNMENT**Package Dimensions 3007A-D18IC
(unit: mm)**

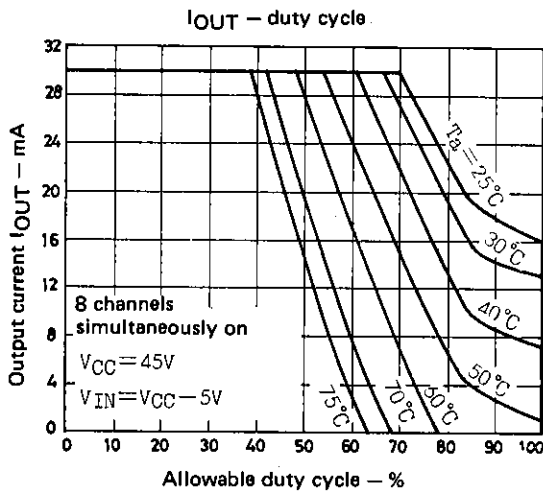
SANYO Electric Co., Ltd. Semiconductor Business Headquarters
TOKYO OFFICE Tokyo Bldg., 1-10, 1 Chome, Ueno, Taito-ku, TOKYO, 110 JAPAN

O2695YK/ 7067KI/ 7315KI/ D152KI, TS No.1173-1/2

EQUIVALENT CIRCUIT



Unit (resistance: Ω)



■ No products described or contained herein are intended for use in surgical implants, life-support systems, aerospace equipment, nuclear power control systems, vehicles, disaster/crime-prevention equipment and the like, the failure of which may directly or indirectly cause injury, death or property loss.

■ Anyone purchasing any products described or contained herein for an above-mentioned use shall:

- ① Accept full responsibility and indemnify and defend SANYO ELECTRIC CO., LTD., its affiliates, subsidiaries and distributors and all their officers and employees, jointly and severally, against any and all claims and litigation and all damages, cost and expenses associated with such use;
- ② Not impose any responsibility for any fault or negligence which may be cited in any such claim or litigation on SANYO ELECTRIC CO., LTD., its affiliates, subsidiaries and distributors or any of their officers and employees jointly or severally.

■ Information (including circuit diagrams and circuit parameters) herein is for example only; it is not guaranteed for volume production. SANYO believes information herein is accurate and reliable, but no guarantees are made or implied regarding its use or any infringements of intellectual property rights or other rights of third parties.